

Let's get set-up!

A **landscape** is all the things you can see in an area of land. This includes landforms (the shapes the land, like mountains or hills) and how everything is integrated with nature or human-made features. If you've ever taken or made a picture, you probably have considered the landscape around your central figure! Once you start noticing and considering the land around you, you'll see it is just as interesting (and sometimes more so) than the people and animals on it!

This week, we'll need:

- Pencil (HB)
- A Pieces of Paper

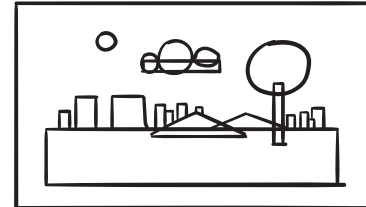
Watch Kay as they explore Landscapes on YouTube

<https://www.youtube.com/user/artstarts/videos>

Join us for a Live Making Workshops on Saturdays

<https://facebook.com/artstarts>

Let's go outside; whether it's your backyard, the playground, a park, or the school yard, bring your pencil and paper outside and find a place to sit. If you're with other people, try to sit in a line or beside each other so you're not blocking each other's view. Close your eyes for a few seconds, then open them up! First using only your eyes, look at everything that you can see right in front of you. What do you notice?



When you're done looking and noticing with your eyes, close your eyes again. What shapes do you remember seeing? Open your eyes and look again! Do you notice something different the second time you look? Try counting all the shapes you can find when you look ahead.

Once you've found all the shapes, try drawing them on your page. Using only rectangles, squares, triangles, and circles, can you map out in a picture everything you can see?

What happens when you:

- only draw things that have grown out of the ground? How does it make the landscape look different?
- imagine how many people could fit onto the land or area you're looking at?
- imagine that it's raining? How would the land or area you're looking at change when it's wet?

Vocabulary. How do we describe the land?

What can you say about the land beneath your feet!

Wide	Nature	Land Cover
Green	City	Land Use
Blue	Skyline	Structures
Open	Mountains	Deserts
Busy	Hills	Forests
Quiet	Water	Islands
Wet/Dry		Icy (polar)